

DESIGN SCHEDULE

Getting Started

The 5 Design Stages:

- 1 - Conceptual Stage*
- 2 - Planning Stage*
- 3 - Finalize Plans & Elevations*
- 4 - Architectural & Construction Specifics*
- 5 - Completion of Construction Drawings*

The design schedule is broken up into five (5) stages with a *Sign-off* at the end of each. These mark the consensus of the Purchaser with all documentation and design decisions made by TimberhArt to date.

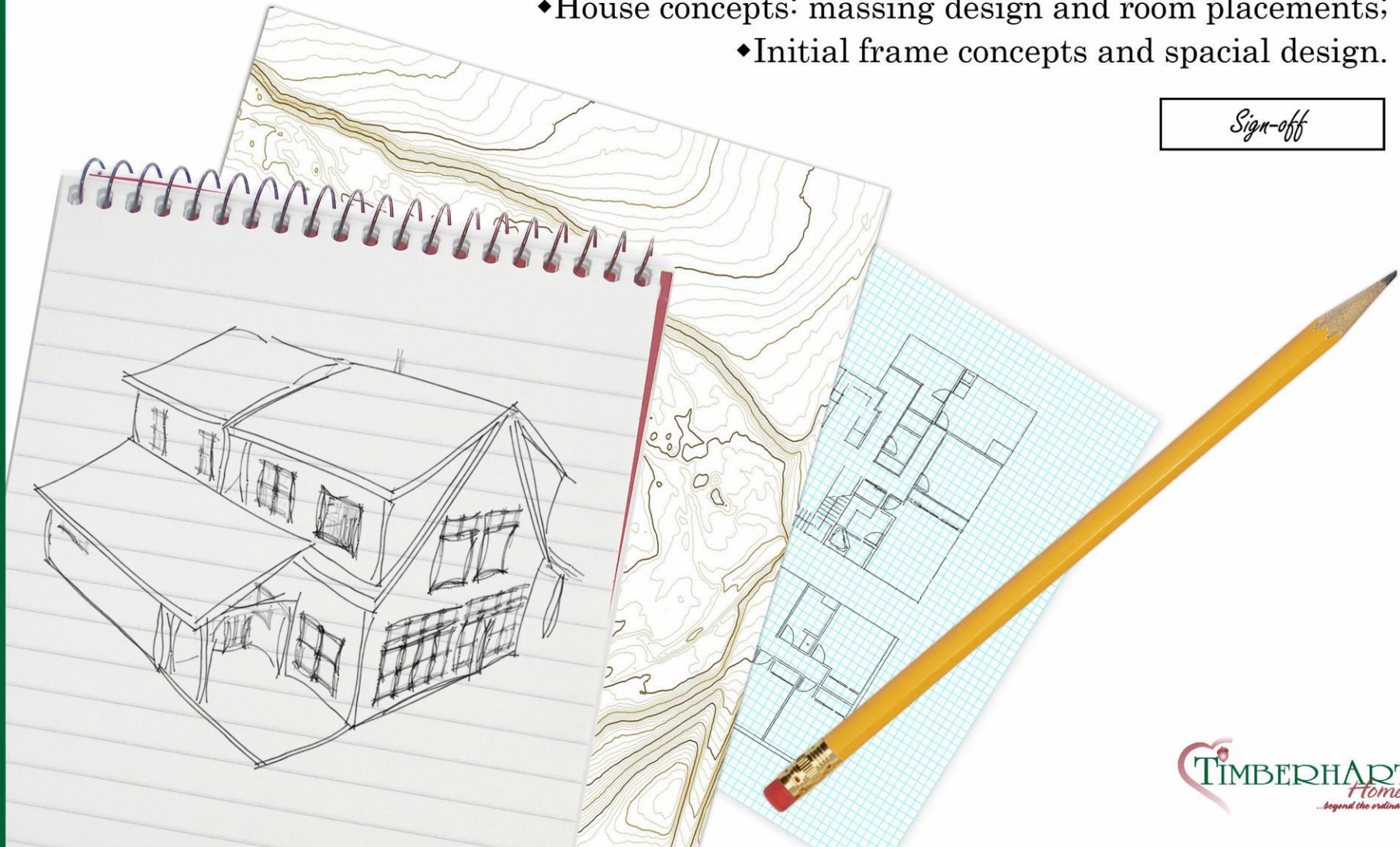
DESIGN SCHEDULE 1

Conceptual Stage

195 Fuller Rd, RR1, Hantsport NS B0P 1P0 Canada
Tel: 902-684-9708 Toll free: 1-866-395-3838 Fax: 902-684-9844
See more on our website: www.TimberhArt.com

- ♦ A review of site plan and details with contour map and survey plan;
- ♦ A review of photos, ideas and any sketches or plans provided;
- ♦ House concepts: massing design and room placements;
- ♦ Initial frame concepts and spacial design.

Sign-off



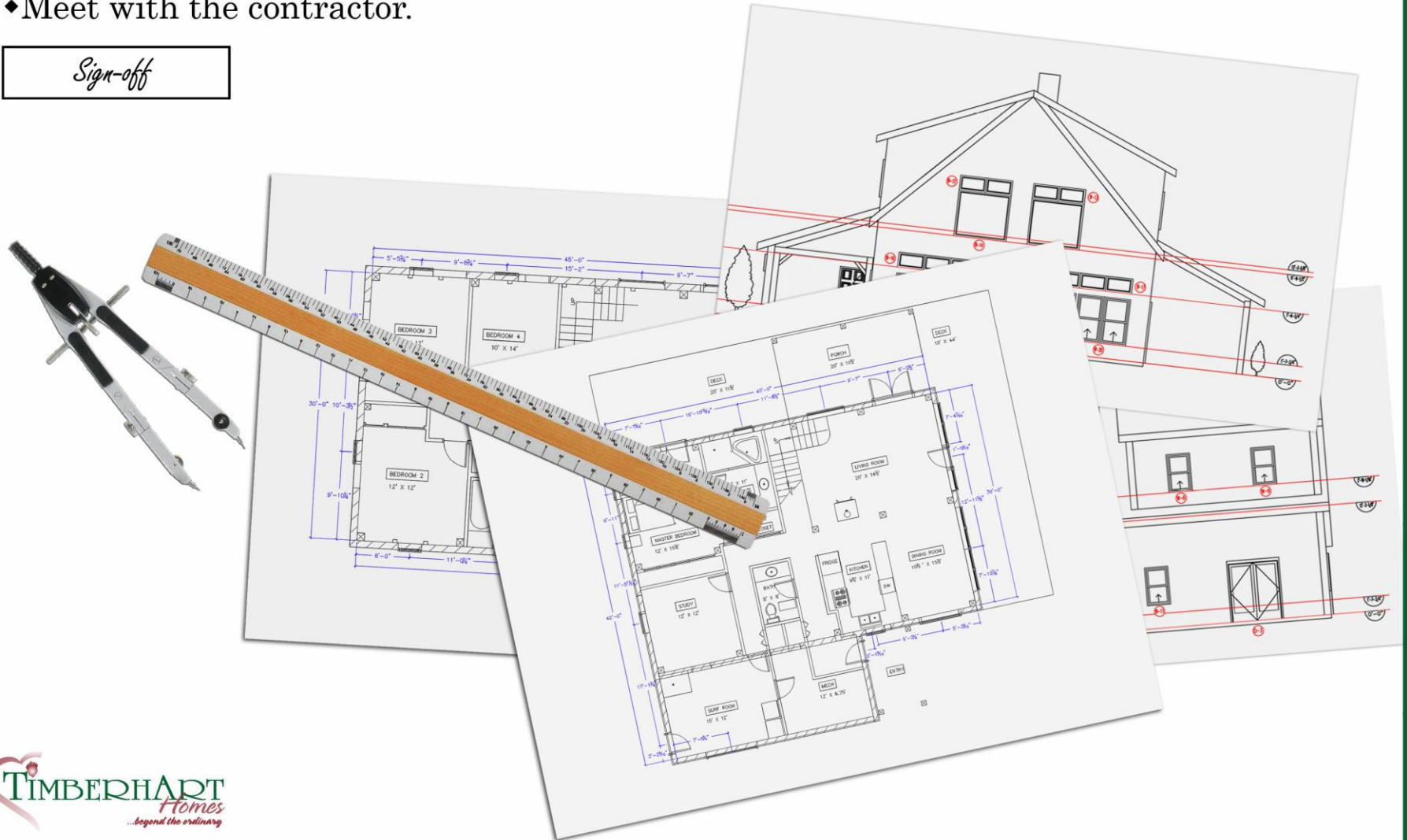
TIMBERHART
Homes
...beyond the ordinary

DESIGN SCHEDULE 2

Planning Stage

- ◆Solidify plans: elevation & section mock-up;
- ◆Firm up timber frame: bent styles, etc;
- ◆Meet with the contractor.

Sign-off



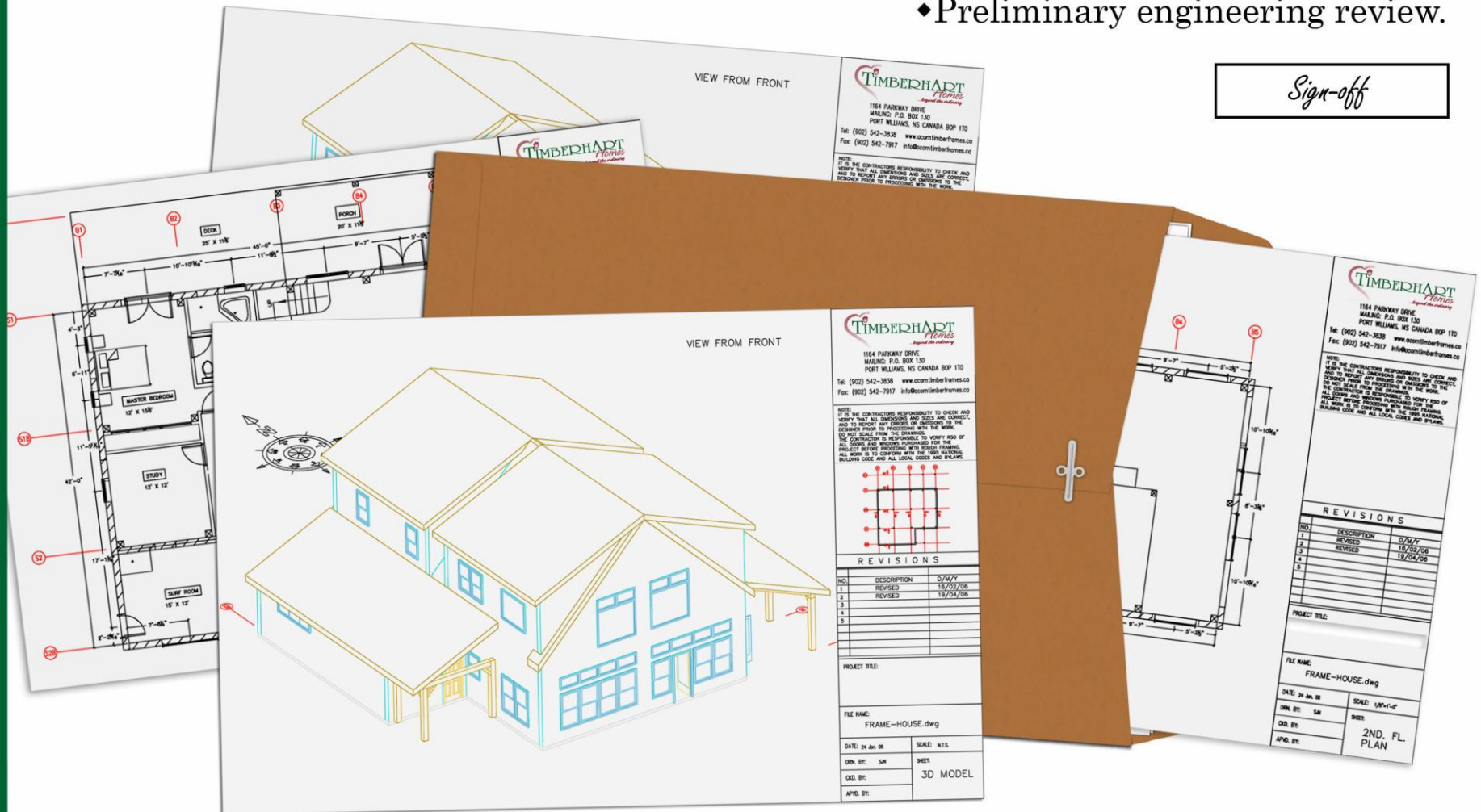
DESIGN SCHEDULE 3

Finalize Plans & Elevations

195 Fuller Rd, RR1, Hantsport NS B0P 1P0 Canada
Tel: 902-684-9708 Toll free: 1-866-395-3838 Fax: 902-684-9844
See more on our website: www.TimberhArt.com

- ◆ Finalize floor plans and elevations;
- ◆ Preliminary engineering review.

Sign-off

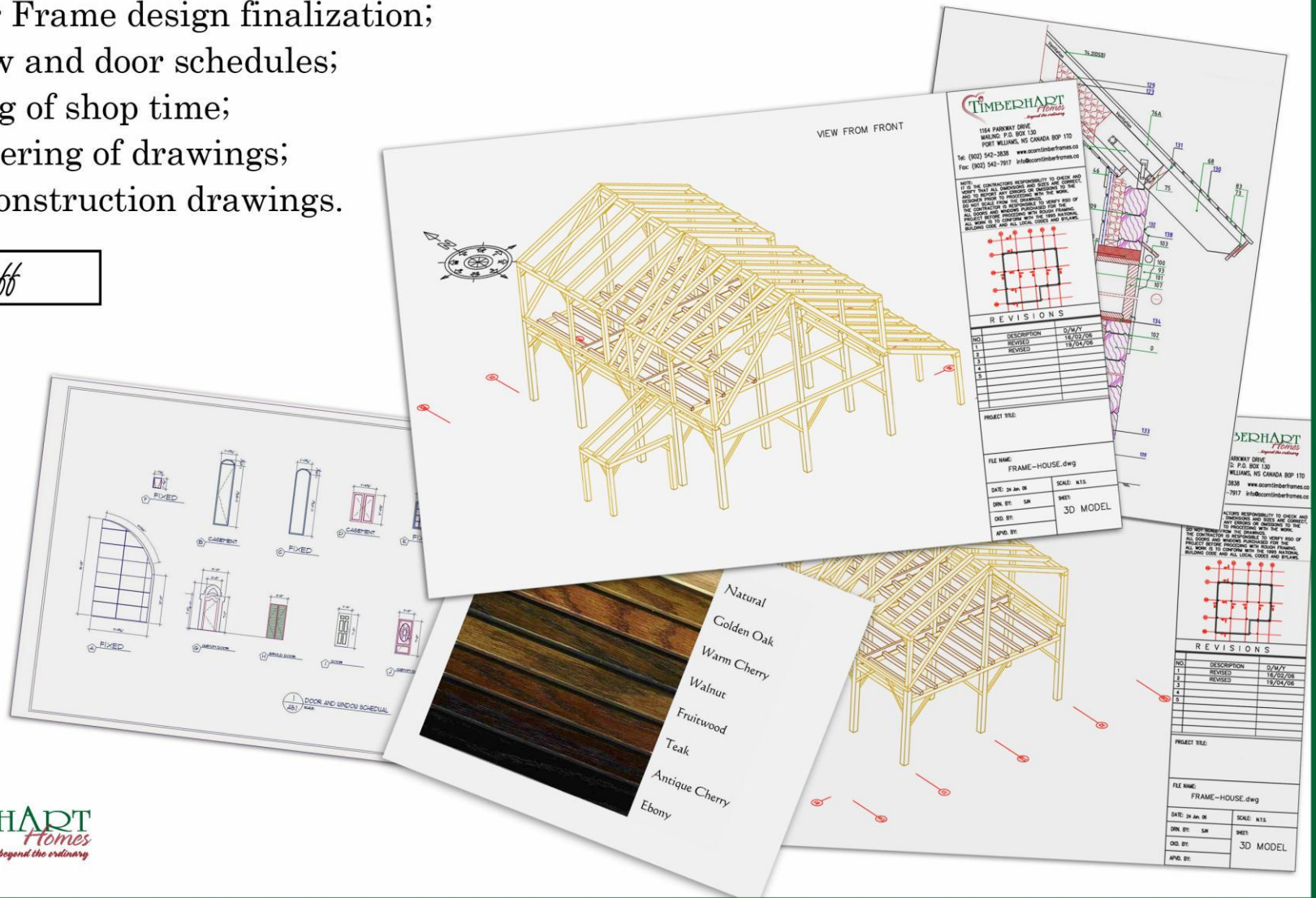


DESIGN SCHEDULE 4

Architectural & Construction Review

- ◆ Technical sections: insulation, sheathing, roofing and exterior finishes;
- ◆ Foundation plan: footing details and connecting plate details;
- ◆ Timber Frame design finalization;
- ◆ Window and door schedules;
- ◆ Booking of shop time;
- ◆ Engineering of drawings;
- ◆ Start construction drawings.

Sign-off



DESIGN SCHEDULE 5

Completion of Construction Drawings

195 Fuller Rd, RR1, Hantsport NS B0P 1P0 Canada
Tel: 902-684-9708 Toll free: 1-866-395-3838 Fax: 902-684-9844
See more on our website: www.Timberhart.com

- ◆ Final timber frame drawings and joinery details;
- ◆ Finalization of the architectural details;
- ◆ Final stamped engineering designs;
- ◆ Drawings for contractor and shop;
- ◆ Drawings sent for building permit.

Sign-off

