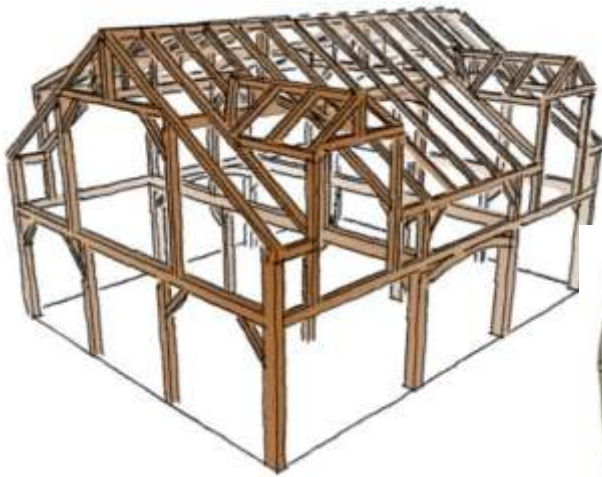


# The Port Cape

## Oak 32' x 40' Story & Half Cape with Dormers

This frame started by walking through a wood lot ready to be harvested. Many of the massive oaks were slated to go to firewood by the forester. We secured 20,000 board feet of logs. The oak was then seasoned for two years, first in the log and then as timber cants. The design was developed based on the sizes, lengths and character of the timbers. Curved pieces were incorporated as arches. The result is a simple elegant timber frame. There are a number of choices and options to tailor this frame to your needs and dreams.



Timber Section being pre-fitted



Curved Arch

## 32 x 40 1 -1/2 OAK STORY CAPE

This Cape is versatile to fit everyone's dreams. It's gabled dormers give the house a graceful look, while the shed dormer allows for efficient use of floor space. The oak timber frame is crafted with large posts and heavy bent girts, while curved arches accent the aesthetic interior presence. The timbers can be hewn or planed, the choice is yours!

It is stylish with its spacious floor plan and simple with strong mortise and tenon joinery. The Cape is easily adaptable and ready for install.

It's massive oak timbers with curved arches and high ceilings create an "awe" factor. The floor plan shows just one possible layout with 2 bedrooms and a master bedroom with ensuite.

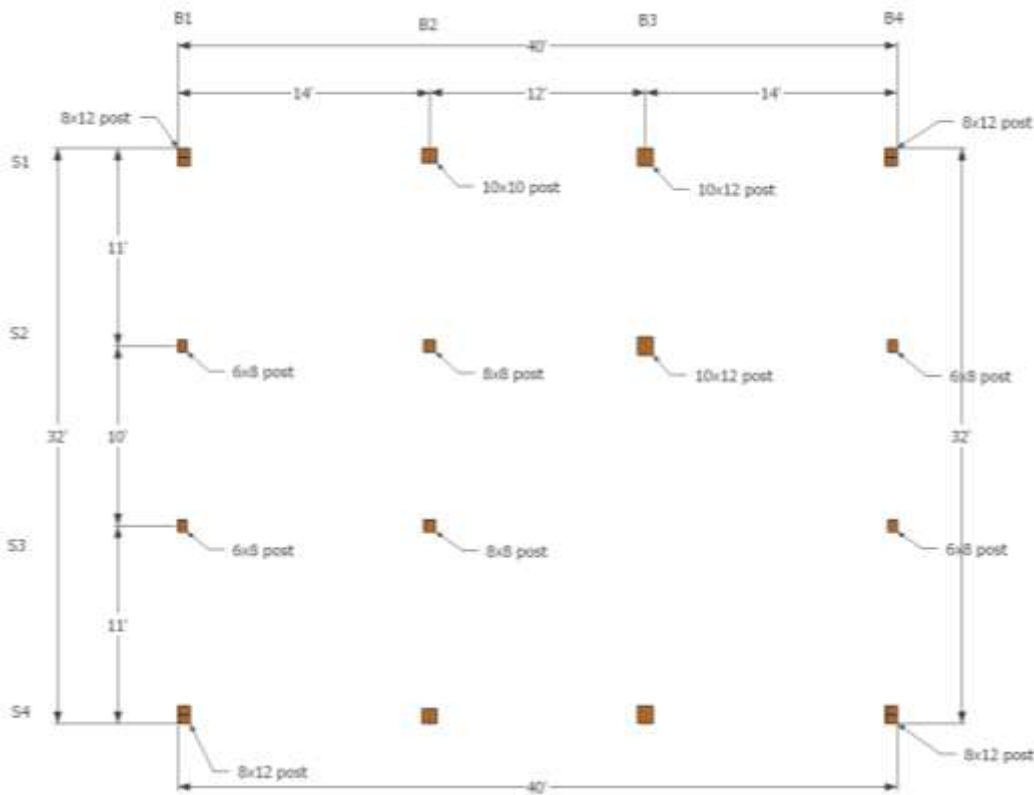


FIRST FLOOR

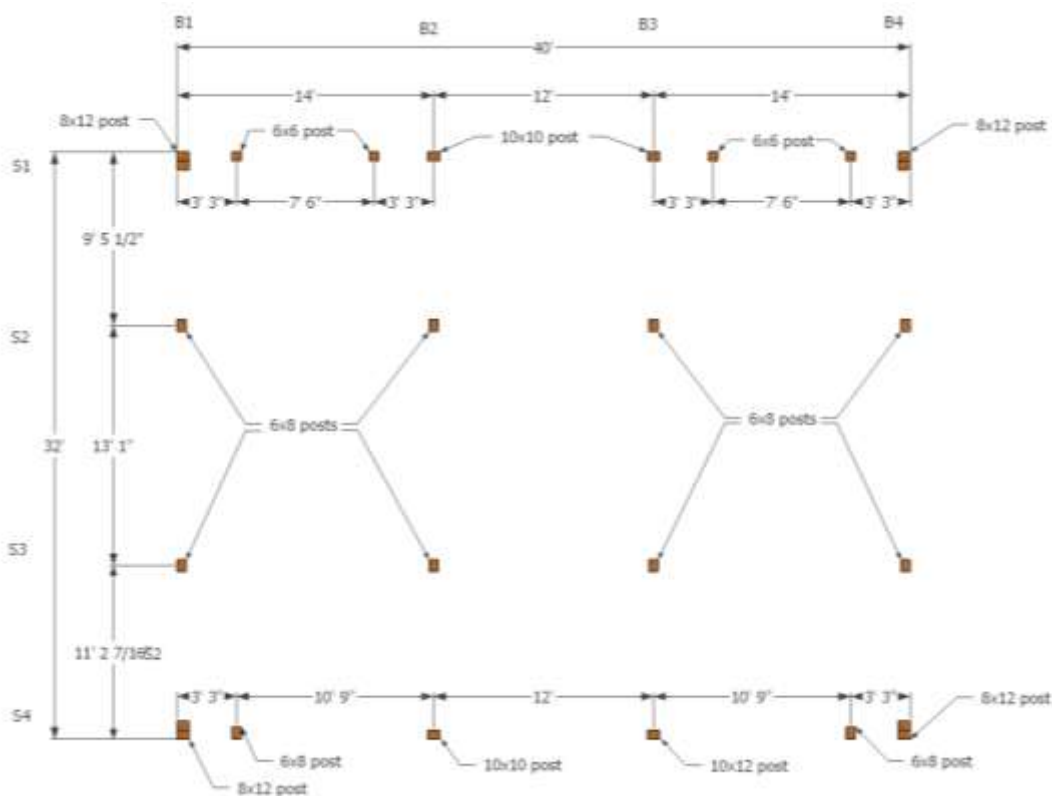


SECOND FLOOR

# Measurements & Sizes

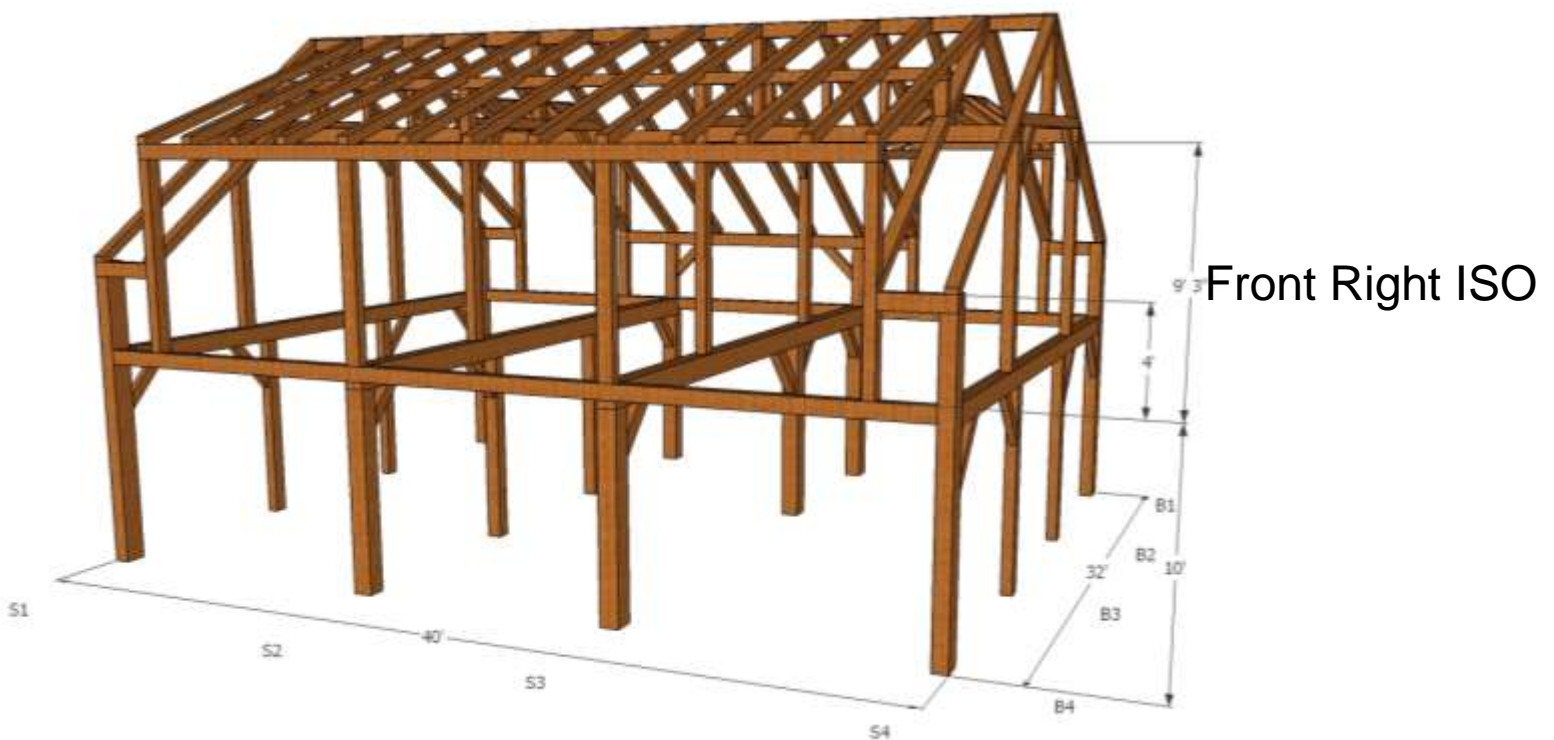
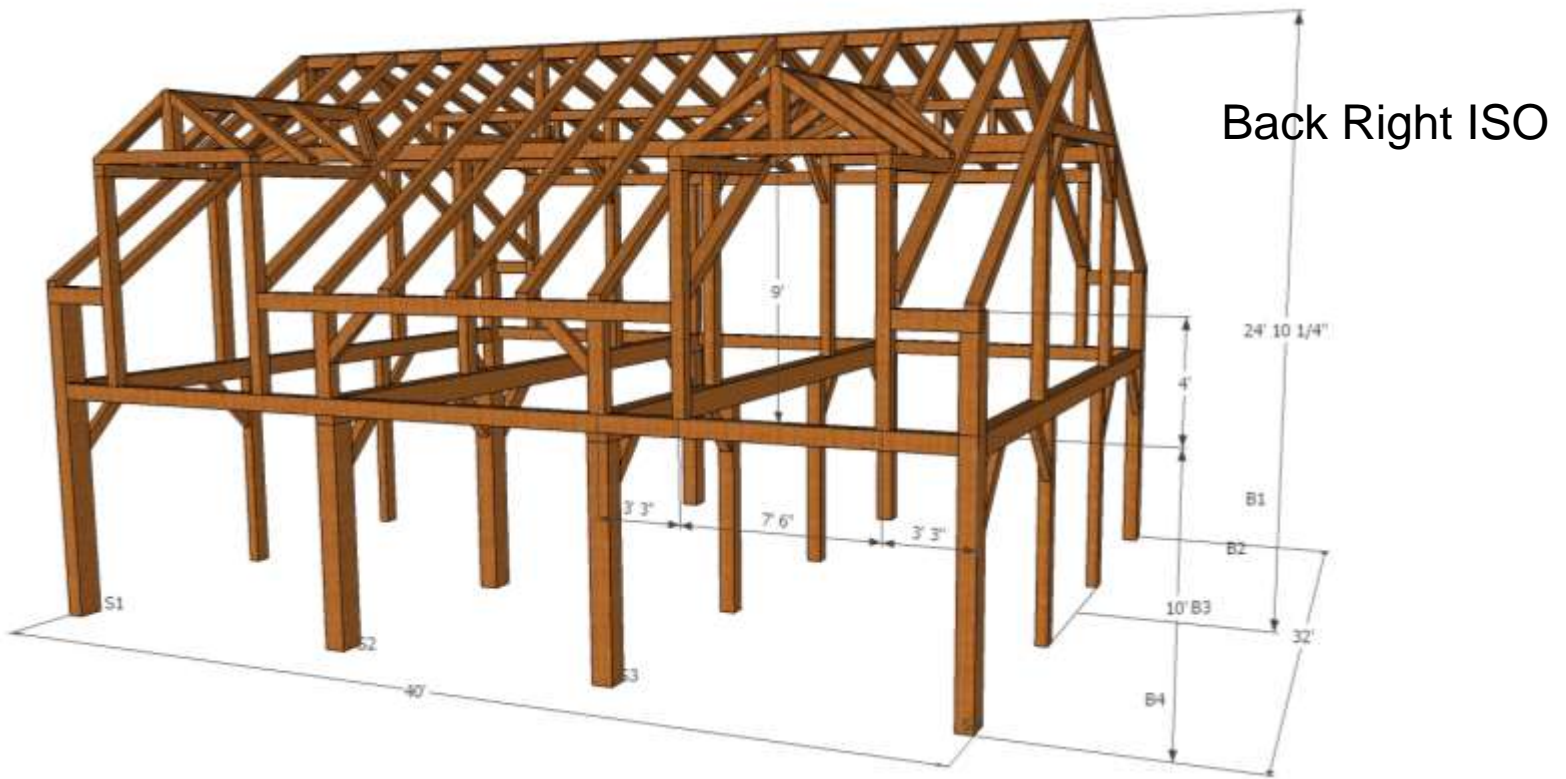


Post Layout First Floor

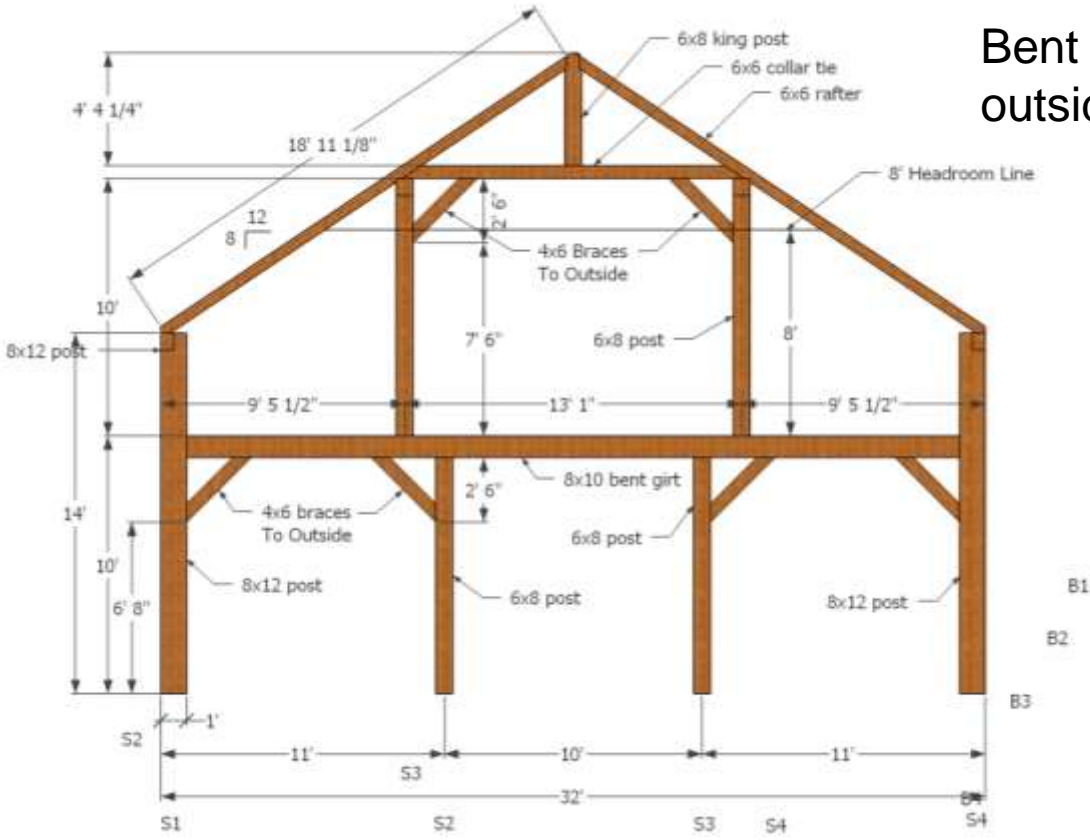


Post Layout Second Floor

# Measurements & Sizes



# Measurements & Sizes



Bent 4 – Looking from outside



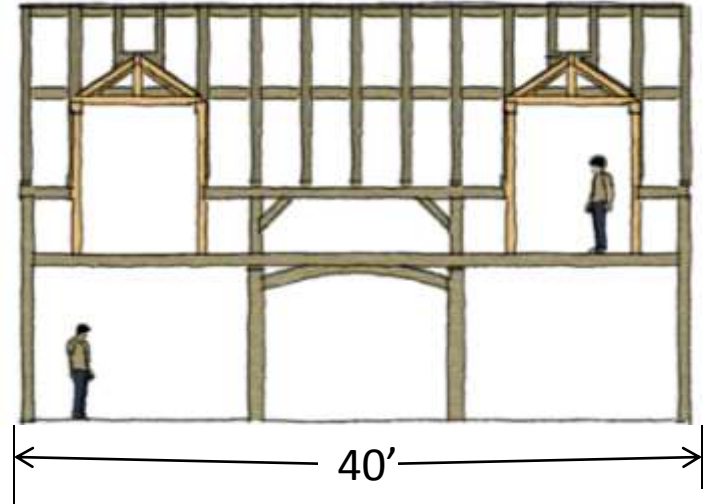
Shown with porch

## SQUARE FOOTAGE

With two floors giving you over 2500 sqft.

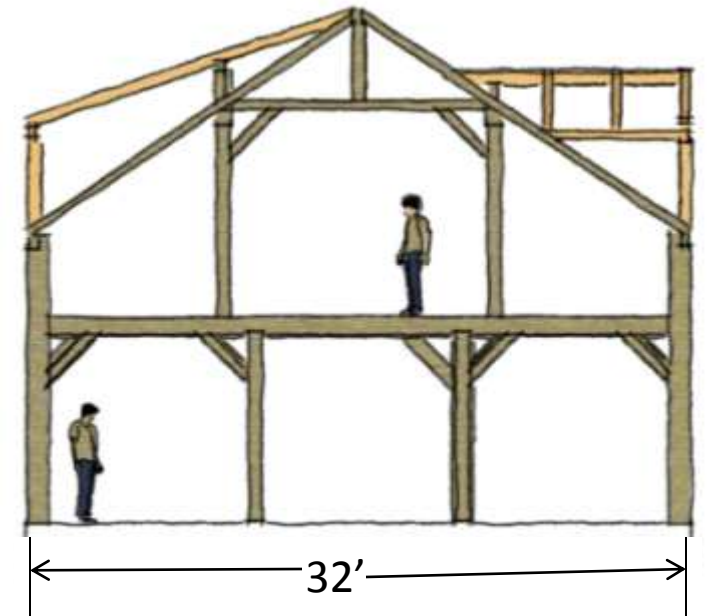
This cape provides plenty of living space.

Sporting 3 bedrooms and 2 and-a-half baths, you'll always be close, but not without personal space. An excellent home or cottage for a medium sized family.



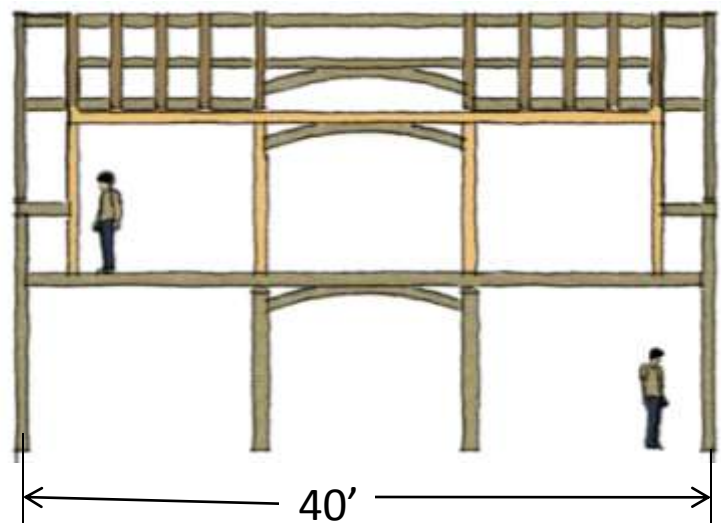
## CATHEDRAL CEILINGS

Because of the Gable roof your upstairs will have lots of head room, showing off the beautiful oak timbers and giving it that breezy spacious feeling.



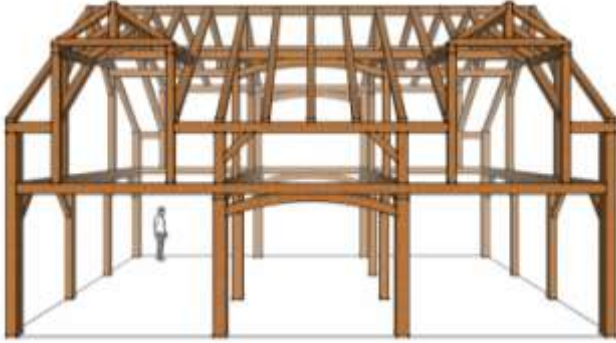
## BEAUTIFUL ARCHWAYS

With a series of archways you're sure to have your guests gushing over the quality and the craftsmanship of this oak timber frame. The style and history that is captured by the Cape is inspiring.



## 32 x 40 1 -1/2 STORY CAPE

---



### *OAK TIMBERS*

Are you looking for a very sturdy, yet elegant designed home? This Cape is stylish with its spacious floor plan and simple with strong mortise and tenon joinery. The Oak Cape is easily adaptable and ready for this building season.

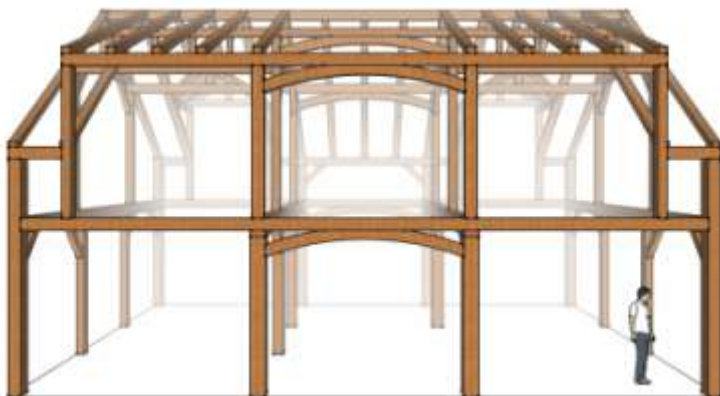


### *GABLE DORMERS*

The two gable dormers give the Cape serious curb appeal. They not only add head room on the second floor, but also give this timber frame lots of character.

### *ONE-AND-A HALF STORY*

With the simple addition of a 4 foot knee wall and shed dormer on the second floor this one-and-a-half story feels more like a full two. It provides a spacious living space without the added cost of a full second story.



### *SHED DORMER*

Nothing's better than a little head room. This full length Shed Dormer enlarges the upstairs living space by simply raising the roof.

## Options & Pricing

---

### *Price includes:*

- Timber Frame and Pegs
- Consultation with Purchaser/Architect/Designer/Engineer./Contractor to discuss how the timber frame connects to other work (allowance 6 hours)
- One coat of oil applied on timber at shop

Timber Frame prices are subject to applicable to sales tax.

### *Options to enhance your frame:*

- Interior and Exterior tailored to your décor
- Versatile to various floor plans
- Make some area cathedral
- Add on wing additions such as entry, porches, garages, breeze way

### *We also offer:*

- Design drawings for building permit and construction
- Modifications to meet your design needs
- Delivery & Installation packages
- Engineered package
- Weather tight packages
- Elm Flooring
- Heritage Wide Board flooring
- Stairs
- Mantles



### *Examples of Oak Timber Frames*

